

OCT 18 - 24, 2021

The Long Island City luxury real estate market, defined as all properties priced \$1M and above, saw 5 contracts signed this week, made up of 4 condos, and 1 house. The previous week saw 6 deals. For more information or data, please reach out to a Compass agent.

\$1,446,583

Average Asking Price

\$1,427,670

Median Asking Price

\$1,437

Average PPSF

0%

Average Discount

\$7,232,913

Total Volume

117

Average Days On Market

Unit 5001 at Skyline Tower, located at 3 Court Square in Hunters Point, entered contract this week, with a last asking price of \$1,764,355. Built in 2019, this condo unit spans 969 square feet with 2 beds and 2 baths. It features city views, engineered white oak floors, wall-to-wall floor-to-ceiling windows, in-unit washer and dryer, a kitchen with quartz slab countertops and matching backsplash, high-end appliances, a primary bedroom with an en-suite bath, and much more. The building provides a full-time doorman, a fitness center, parking, a business center, and a number of other amenities.

Also signed this week was Unit 4E at Star Tower, located at 27-17 42nd Road in Hunters Point, with a last asking price of \$1,483,888. Built in 2019, this condo spans 1,228 square feet with 2 beds and 2 baths. It features high ceilings, floor-to-ceiling windows, a luxury open kitchen with high-end appliances and quartz countertops, pendant and recessed lighting, engineered hardwood floors throughout, and much more. The building offers a 5-star hotel amenity package, including a bike room, fitness center, roof deck, on-site parking, and more.

4

Condo Deal(s)

0

Co-op Deal(s)

1

Townhouse Deal(s)

\$1,458,479

Average Asking Price

\$0

Average Asking Price

\$1,399,000

Average Asking Price

\$1,455,779

Median Asking Price

\$0

Median Asking Price

\$1,399,000

Median Asking Price

\$1,437

Average PPSF

N/A

Average PPSF

\$0

Average PPSF

1,026

Average SqFt

N/A

Average SqFt

0

Average SqFt

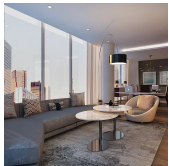


SKYLINE TOWER (3 CT SQ) # 5001

Hunters Point

Type	Condo	Status	Contract
SqFt	969	Beds	2
PPSF	\$1,821	Fees	\$1,385

Ask	\$1,764,355
Baths	2
DOM	N/A

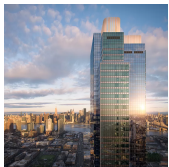


STAR TOWER (27-17 42 RD) # 4 E

Hunters Point

Type	Condo	Status	Contract
SqFt	1,228	Beds	2
PPSF	\$1,209	Fees	\$1,475

Ask	\$1,483,888
Baths	2
DOM	85

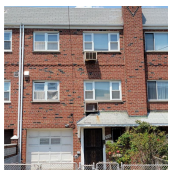


SKYLINE TOWER (3 CT SQ) # 508

Hunters Point

Type	Condo	Status	Contract
SqFt	957	Beds	2
PPSF	\$1,492	Fees	\$1,440

Ask	\$1,427,670
Baths	2
DOM	230

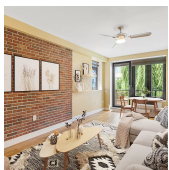


36-36 24 ST

Long Island City

Type	Townhouse	Status	Contract
SqFt	N/A	Beds	5
PPSF	N/A	Fees	\$691

Ask	\$1,399,000
Baths	3
DOM	73



47-34 11 ST # 302

Hunters Point

Type	Condo	Status	Contract
SqFt	947	Beds	2
PPSF	\$1,223	Fees	\$839

Ask	\$1,158,000
Baths	2
DOM	79

Compass is a licensed real estate broker and abides by Equal Housing Opportunity laws. All material presented herein is intended for informational purposes only. Information is compiled from sources deemed reliable but is subject to errors, omissions, changes in price, condition, sale, or withdrawal without notice. No statement is made as to the accuracy of any description. All measurements and square footages are approximate. This is not intended to solicit property already listed. Nothing herein shall be construed as legal, accounting or other professional advice outside the realm of real estate brokerage.